

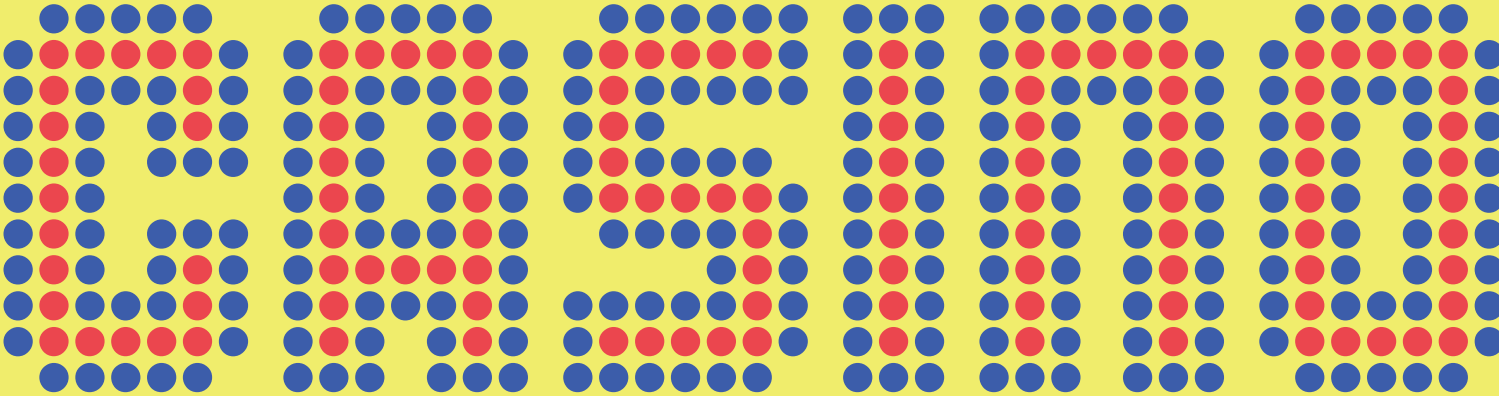
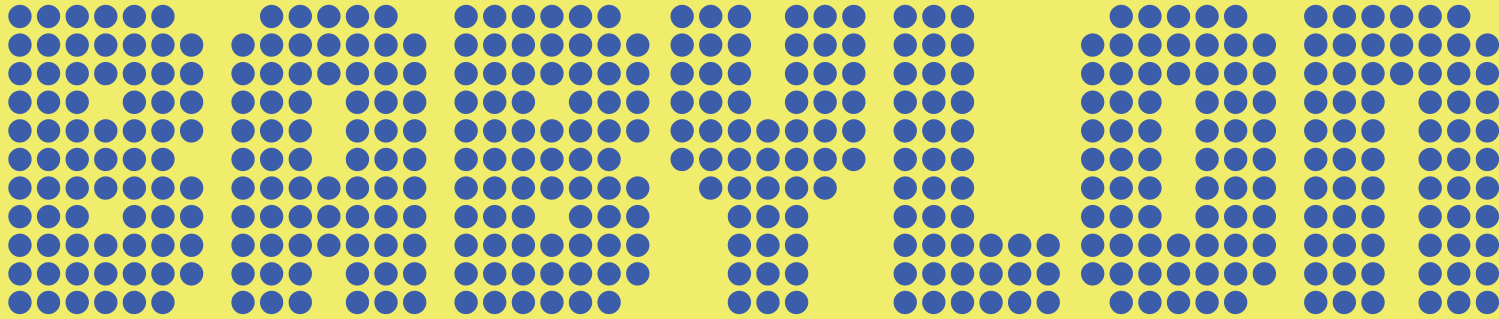
BRILLIANT™

Inspired by the bright lights.

Designed by François Robert

Initial Release · Version 1.0 · June 8, 2023

BAUDOT



BAUDOT

BAUDOT

Roller Derby Champions

Frunchroom & prairie view

Roller Derby Champions

Frunchroom & prairie view

Roller Derby Champions

Frunchroom & prairie view

BAUDOT

BAUDOT

Hambur

01

Hambur ge font s i v

Baudot Bold (700)

02

Hambur ge font s i v

Baudot Regular (400)

03

Hambur ge font s i v

Baudot Light (300)

04

Hambur ge font s i v

Baudot Pop Open (400)

05

Hambur ge font s i v

Baudot Pop Fill (400)



Layer Baudot Pop's Open and Inline styles together for a show-stopping chromatic effect. Here's how to light up your design:



STEP 1.
Create and position a new layer using Baudot Open.



STEP 2.
Copy the first layer, creating a new one in the same position. Change the font to Baudot Inline in the new layer.



STEP 3.
Adjust the colors of each layer as you like it. And that's a wrap! Mic drop and exit stage left.

Features

STYLISTIC ALTERNATES

art & l → ort & l

LOCALIZED FORMS

LOST → LOST

SMART ROMAN NUMERALS

2023 → MMXXIII

FRACTIONS

1/2 3/4 → ½ ¾

DISCRETIONARY LIGATURES

ST OY → ST Ø

Additional Features Include: Contextual Alternates, Positional Forms, Ordinals, Superscript, Numerators, Denominators, Slashed Zero, and Case-Sensitive Forms



The story of Baudot [bo 'do] begins in 1968, in Milan Italy. François Robert was inspired by the bright lights of Las Vegas to create a headline alphabet embodying the appeal of glitzy entertainment of that period with the idea for its use possibly like that of a marquee to announce upcoming showtimes.

Robert's entry was selected for publication in an open call for submissions of new type designs and subsequently released as dry transfer type (a.k.a. rub-down type) under the name "Chicago", which went on to grace magazine covers, posters, albums, and books throughout the 1970s and early 1980s.

As digital font technology arose, Robert's Chicago was left behind and new (unrelated) typefaces were later published under the name Chicago, most notably the bitmap font on the original Macintosh system. Fast-forward to the fall of 2022, Jean-Benoît Lévy introduced Robert to Delve Withrington, kicking off a collaboration to produce Robert's original design again, from scratch, and re-imagined for the 21st century.

The resulting type family – with the new title "Baudot", which is a nod to Émile Baudot and his 1872 invention of Baudot code, a precursor of ASCII – is comprised of three weights: Light, Regular, and Bold, plus two styles for color layering: Baudot Pop Open and Baudot Pop Fill. While Baudot is primarily

a grid-based design, it strays from that rigidity selectively by utilizing offset positions as a second grid in some instances to reduce gaps in strokes and to achieve a more consistent representation of design intent across the typeface. As one would expect of today's fonts, Baudot has handy OpenType features and a broad glyph repertoire supporting over 225 languages, including Vietnamese, Greek, plus Cyrillic script.

Baudot is certain to add some dazzle and delight to any headline or dropcap treatment, especially with the layering option employed for a flashy chromatic effect. •!•

Designer: François Robert

Font Development: Delve Withrington

Special thanks to: Jane Gittings Robert and Jean-Benoît Lévy

Baudot has three styles: Light, Regular, and Bold

Baudot Pop has two styles for layering: Open and Fill

Formats Available: OpenType (OTF), Truetype (TTF), and Web-fonts (WOFF, WOFF2)

Licenses for Desktop, Webfonts, and Mobile App Fonts are available for purchase at DelveFonts.com. Contact Delve Fonts for more licensing options such as: ePubs, OEM, Broadcast.



Baudot supports the following 224 languages:

Abenaki, Abkhaz, Afaan Oromo, Afar, Afrikaans, Albanian, Alsatian, Amis, Anuta, Aragonese, Aranese, Aromanian, Arrernte, Arvanitic, Asturian, Atayal, Aymara, Azerbaijani, Bashkir, Basque, Belarusian, Bemba, Bikol, Bislama, Bosnian, Breton, Bulgarian, Cape Verdean, Catalan, Cebuano, Chamorro, Chavacano, Chichewa, Chickasaw, Cimbrian, Cofan, Corsican, Creek, Crimean Tatar, Croatian, Czech, Danish, Dawan, Delaware, Dholuo, Drehu, Dungan, Dutch, English, Estonian, Faroese, Fijian, Filipino, Finnish, Folkspraak, French, Frisian, Friulian, Gagauz, Galician, Ganda, Genoese, German, Gikuyu, Gooniyandi, Greenlandic, Greenlandic Old Orthography, Guadeloupean, Gwichin, Haitian Creole, Han, Hawaiian, Hiligaynon, Hopi, Hotcak, Hungarian, Icelandic, Ido, Igbo, Ilocano, Indonesian, Interglossa, Interlingua, Irish, Istroromanian, Italian, Jamaican, Javanese, Jerriais, Kaingang, Kala Lagaw Ya, Kapampangan, Kaqchikel, Karakalpak, Karelian, Kashubian, Kazakh, Kikongo, Kinyarwanda, Kiribati, Kirundi, Klingon, Kurdish, Kyrgyz, Ladin, Latin, Latino Sine, Latvian, Lithuanian, Lojban, Lombard, Low Saxon, Luxembourgish, Maasai, Macedonian, Makhuwa, Malay, Maltese, Manx, Maori, Marquesan, Meglenoromanian, Meriam Mir, Mirandese, Mohawk, Moldovan, Mongolian, Montagnais, Montenegrin, Murrinhpatha, Nagamese Creole, Ndebele, Neapolitan, Ngiyambaa, Niuean, Noongar, Norwegian, Novial, Occidental, Occitan, Oshiwambo, Ossetian, Palauan,

Papiamento, Piedmontese, Polish, Portuguese, Potawatomi, Qeqchi, Quechua, Rarotongan, Romanian, Romansh, Rotokas, Russian, Rusyns, Sami Inari, Sami Lule, Sami Southern, Samoan, Sango, Saramaccan, Sardinian, Scottish Gaelic, Serbian, Seri, Seychellois, Shawnee, Shona, Sicilian, Silesian, Slovak, Slovenian, Slovio, Somali, Sorbian Lower, Sorbian Upper, Sotho Northern, Sotho Southern, Spanish, Sranan, Sundanese, Swahili, Swazi, Swedish, Tagalog, Tahitian, Tajik, Tetum, Tok Pisin, Tokelauan, Tongan, Tshiluba, Tsonga, Tswana, Tumbuka, Turkish, Turkmen, Tuvaluan, Tzotzil, Ukrainian, Uzbek, Venetian, Vepsian, Vietnamese, Volapuk, Voro, Wallisian, Walloon, Waraywaray, Warlpiri, Wayuu, Welsh, Wikmungkan, Wiradjuri, Wolof, Xavante, Xhosa, Yapese, Yindjibarndi, Zapotec, Zazaki, Zulu, Zuni

Glyphs

36PT SOLID

0 1 2 3 4 5 6 7 8 9 : ; < = > ? @ A B C D E F G H I J K L M
 N O P Q R S T U V W X Y Z [\] ^ _ ` a b c
 d e f g h i j k l m n o p q r s t u v w x y

Glyphs

36PT SOLID

Œ œ Œ Œ Œ Ę ę Ę ę Ę ę Ę ę Ę ę Ę ę Ę ę Ę ę Ę ę
 Ź ź Ź ź ħ h ĩ ĩ ĩ ĩ ĩ ĩ ĩ ĩ ĩ ĩ ĩ ĩ ĩ ĩ ĩ ĩ ĩ ĩ ĩ
 Ń ń Ń ń Ń ń Ń ń Ń ń Ń ń Ń ń Ń ń Ń ń Ń ń Ń ń Ń ń
 Œ œ Œ œ Œ œ Œ œ Œ œ Œ œ Œ œ Œ œ Œ œ Œ œ Œ œ Œ œ
 Œ œ Œ œ Œ œ Œ œ Œ œ Œ œ Œ œ Œ œ Œ œ Œ œ Œ œ Œ œ

Glyphs

36PT SOLID

Ÿ Ź ą ó ō ŏ ǒ ǔ ǖ ǘ ǚ ǜ Ǟ Ǡ Ǣ Ǥ Ǧ Ǩ Ǭ Ǯ
 Б В Г Г' Д Е Ё Ё' Ж З И Й Й' К К' Л Т Н О П
 Р С Т У У' Ф К Ч Ц Ш Щ Ч Ъ Ы Ь Ъ' Ь' С Е
 Э І І' Ј Ъ Ю Я Ъ Д Л Ф А Б В Г Г' Д Е Ё
 Ж З И Й Й' К К' Л Т Н О П Р С Т Ч У У' Ф К Ч

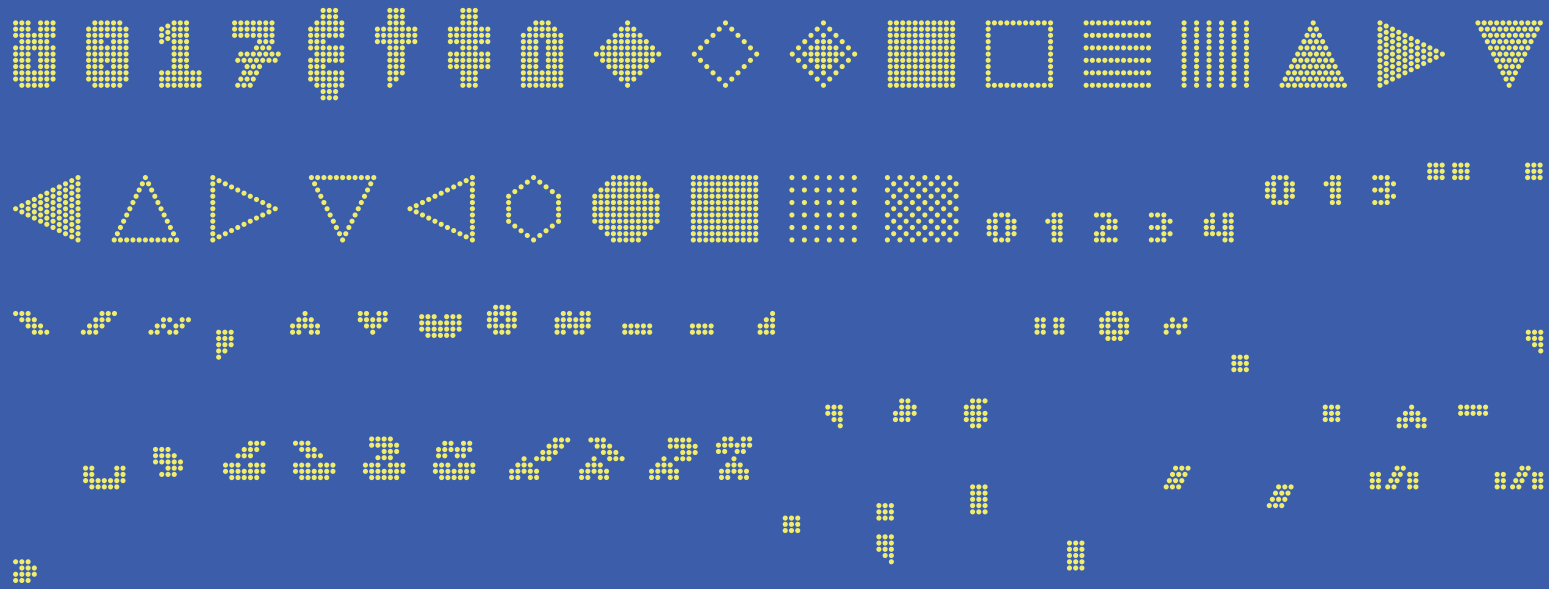
Glyphs

36PT SOLID

á é ñ ÿ | II III IV V VI VII VIII IX X XI XII L C
 D M DECC LXXX NL CD CM MC DCC LXX DC
 LX XXX CCC MMMM XX CC MM I II III IV
 VI VII VIII IX XI XII ð ð ð ð ð ð ð ð ð
 P P R S Z Z Z Z Z Z Z Z Z Z Z Z Z Z Z Z

Glyphs

36PT SOLID



BAUDOT



DELVE FONTS

EMAIL:

support@delfefonts.com

PHONE:

1.510.883.3358

MAILING ADDRESS:

Delve Fonts LLC
2717 Santa Clara Ave.
Alameda, CA 94501

Baudot, Tome, and Delve Fonts are trademarks of Delve Fonts LLC. All other trademarks or copyrights mentioned are the property of their respective owners.

Copyright © 2023, Delve Fonts LLC. All Rights Reserved.

BAUDOT